

**2022**

# **ANNUAL REPORT**

**Cape Girardeau County  
Public Health Center**



**Prevent. Promote. Protect.**



# Table of Contents

Message from the Director.....	1
Health Center Overview.....	2
Health Priorities Highlights.....	3
Nursing Services and Immunizations.....	4
Vital Records.....	5
Pregnancy Testing.....	5
Lead Testing.....	5
Case Management.....	6
Child Care Consultants.....	6
Women, Infants, and Children (WIC).....	7
Rural Health Clinic .....	8
Communicable Disease.....	9
Communicable Disease Services.....	10
Health Education Services.....	11
Environmental Health Services .....	12
Emergency Preparedness .....	13
Community Health Worker.....	14
Financial Report .....	15
Coalition Membership.....	16

# Message from the Director

Welcome to the Cape Girardeau County Public Health Center's 2022 Annual Report!

We are pleased to present the 2022 Annual Report for the Cape Girardeau County Public Health Center. This report provides a summary of the many services and activities that the Health Center has provided to assure our core functions of assessment, assurance, and policy development. Among the many highlights of the year were the over 525 food establishments inspected by the Environmental Health staff, the over 6,000 death certificates issued and over 4,500 birth certificates issued, and the initiation of PrEP clinical services and the Community Health Worker program.

As we entered 2022, Public Health nationwide was continuing to respond to many communicable diseases including COVID-19. Locally that has meant working in close collaboration with our community residents, stakeholders, and partners to address the many arising needs. Public Health work encompasses an ever-changing, complex, and sometimes challenging approach to reach the goal of providing services that contribute to healthy outcomes for the county.

My sincere thanks and appreciation to the Cape Girardeau County Public Health Center workforce – the best there is – the Board of Trustees, the County Commissioners, collaborating partners, and our citizens for their support, guidance, and continued commitment to the health and well-being of the county.

With grateful appreciation,

A handwritten signature in black ink that reads "Jane Wernsman". The signature is written in a cursive, flowing style.

Jane Wernsman, Director

# Health Center Overview

The Cape Girardeau County Public Health Center was created in 1986 when county residents approved the establishment of a property tax to support public health activities. Public Health efforts are designed to prevent illness, prolong life, and improve and protect the health of all the people in our community.

## An Accredited Local Public Health Agency:

The Cape Girardeau County Public Health Center initially became an Advanced Level Accredited agency in July 2015 through the Missouri Institute for Community Health (MICH). The Health Center will be seeking re-accreditation in 2023. Being an accredited agency indicates that the Health Center has completed a comprehensive evaluation and has the capacity to provide the cross-cutting skills required to deliver the Foundational Public Health Services and achieve equitable health outcomes.

### Mission:

The Cape Girardeau County Public Health Center promotes good health and protects the county's public health through:

- Assessment of Health and Environmental Needs
- Policy Development
- Prevention
- Assurance
- Evaluation

### Vision:

Cape Girardeau County will be a community where the safety and health needs of all people are identified, addressed, and resolved.

### Core Values:

We believe in promoting access to care, communicable disease prevention and control, disaster preparedness, and quality environmental health services for all residents of Cape Girardeau County. We believe community partnerships and collaborations are key factors in achieving our strategic goals.

# Health Priorities Highlights

In 2018, the Cape Girardeau County Public Health Center completed a tri-annual Community Health Assessment (CHA) where three health topics were identified as focus areas for the county's health efforts. These areas were:

1. Mental Health
2. Wellness & Prevention
  - a. Substance Abuse
  - b. Obesity
  - c. Smoking
  - d. Dental Health
  - e. Chronic Disease
3. Access to Care
  - a. Transportation

## Mental Health

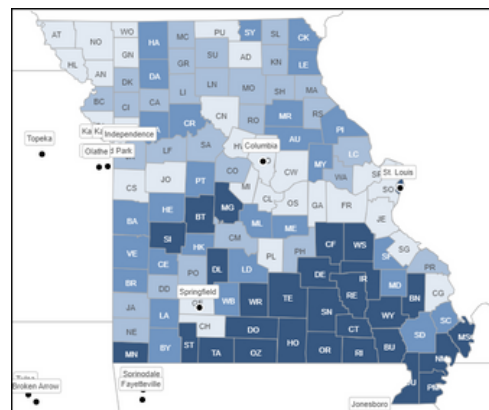
The 2022 County Health Rankings and Roadmaps (CHR&R) report a ratio of 340:1 Mental Health Providers per individual in the county. According to the CHR&R report for 2022, 16% of Cape Girardeau County residents report frequent mental distress, and 4.8 mentally unhealthy days per month are experienced according to 2019 data. In 2019, 17 Cape Girardeau County residents died by suicide according to the Missouri Department of Mental Health. For more information or resources, you can visit <https://dmh.mo.gov/behavioral-health/suicide/prevention>. The Health Center serves as a resource for education and referral to mental health resources in our community and beyond.

## Wellness & Prevention

The 2022 County Health Rankings and Roadmaps report Cape Girardeau County as ranking 46th in Missouri for overall Health Outcomes that measure how healthy the county is right now. 21% of the County population reports they are currently smoking. Obesity in the County stands at 33% with 29% reporting physical inactivity and lack of access to exercise opportunities. The Health Center partners with community coalitions aimed at education and prevention. One activity offered free of charge is a 6-week workshop to help residents or their support persons to better self-manage their chronic conditions.

## Access to Care

The Cape Girardeau County Transit Authority offers free bus rides to all residents in the county. These buses follow a fixed route that includes hospitals, shopping centers, and some residential areas. There is also an on-demand taxi with a \$7 beginning rate and a \$4 rate for seniors that can take anyone to any location inside Cape Girardeau County. The Health Center is currently a "stop" on the Red/South bus line with arrivals hourly from 8:20 a.m. to 3:20 p.m.



2022 County Health Rankings and Roadmaps Health Factors Map  
2022 County Health Roadmaps and Rankings show Cape Girardeau County as placing 10th in the State for overall Health Factors that are modifiable to improve or worsen the health of the county.

# Nursing Services

Nurses are involved in providing multiple services through the Health Center including:

- Immunizations
- Tuberculosis Skin Testing
- Tuberculosis Case Management
- Sexually Transmitted Disease screening, treatment, and counseling
- Communicable Disease Clinic
- Pregnancy Testing and issuance of temporary Medicaid
- Child Care Consultant Services
- Case Management for prenatal, and elevated blood leads for Infants and children.
- Communicable Disease Reporting

## Walk-in Services

Nurses are available on a daily basis to assist patrons as needed. Walk-in nursing services include:

- Blood Pressure Checks
- Tuberculosis Skin Testing
- Lead Testing
- B12 Injections
- Additional Services

We provided 8,940 services in 2022.

## Immunizations

Immunizations for adults and children are offered at the Health Center through walk-in services or immunization clinics. Immunizations are also offered in coordination with area schools, at some public events, and more.

The overall number of vaccinations given through the Health Center during 2022 was 6,934. There were also 1,697 COVID-19 vaccinations given.

In an effort to increase vaccination rates among 8th and 12th graders, the Health Center attends Back-to-School and school registration events. A complete list of required school vaccinations for each school year can be found at:

<https://health.mo.gov/living/wellness/immunizations/pdf/2023schoolrequirements.pdf>.

The chart below shows the number of doses of the majority of vaccines given in 2022. The numbers shown are from walk-ins, our immunization clinics, and the many public, school, and drive-through events held offsite.

Vaccine	Number Given
Chickenpox/Varicella	113
DTaP	34
Flu (All Settings)	1956
Gardasil	356
Hepatitis A	132
Hepatitis B	185
Hib	25
Kinrix (Dtap/IPV)	67
Meningitis (ACWY & B)	1064
MMR (measles, mumps & Rubella)	95
MMR (measles, mumps & Rubella) and Varicella	105
Pediarix (Hep B/IPV/DTaP)	41
Pentacel (Dtap/Hib/IPV)	47
Pneumonia	130
Polio (IPV)	50
Rotovirus	29
Shingles	295
Td	25
TDaP	474
Vaxelis (Dtap, IPV, Hib, Hep B)	14

## Vital Records

Certified copies of birth and death certificates are provided in conjunction with the Missouri Department of Health and Senior Services, Bureau of Vital Records. Birth Certificates are currently \$15 per copy and are available for those born in Missouri after 1920. Death certificates are currently \$14 per copy, \$11 for additional copies, and available for those who died after 1980. Following are the number of certificates issued in 2022:

4,581 Birth Certificates

6,335 Death Certificates

## Pregnancy Testing

Pregnancy testing is offered by appointment on Tuesdays from 8:30 a.m. to 12 p.m., at no cost. Temporary Medicaid can be issued if income requirements are met. A risk appraisal is performed on all positive pregnancies' to assess any behaviors, environmental factors, previous health history, etc. that would show a higher risk for poor birth outcomes and therefore a needed referral to case management services. Those who have a positive pregnancy test and smoke are referred to local programs to assist with quitting, if interested.

38 Pregnancy Assessments

60 Risk Appraisals

## Lead Testing

Children, 9 months through 5 years of age, are assessed for lead risk factors during routine visits to the Health Center's Rural Health Clinic. Outreach lead testing at the local Head Start is also provided. Capillary lead testing is also available for children in this age range on a walk-in basis. Children who show an elevated capillary blood lead level then receive a confirmatory venous blood test. Due to updates and adjustments in the guidelines in the Missouri State Lead Poisoning Program, any child with a capillary lead test over 3.5µg/dl was followed and provided Lead Poisoning education and guidance through the Lead Case Management program until their lead levels dropped back down below 3.5µg/dl. (The previous guideline designated that any child over 5µg/dl is followed until the level is optimal again). Reported lead tests are for the entire Health Center during 2022.

86 Lead Assessments/Tests

37 Children Followed for Blood Lead Levels

# Case Management

Case management services are available for any eligible pregnant woman that may be at risk for poor pregnancy outcomes. These services are intended to encourage adequate prenatal care to help reduce the incidence of infant mortality and low birth weight. Prenatal clients that wish to participate are enrolled in case management and seen by a public health nurse for assessment, teaching, referral, and support.

Due to the expansion of the Medicaid Managed Care Network in Missouri, lead case management at the local public health level is no longer monetarily reimbursed. The full case management piece has transitioned to the Managed Care Companies. Our public health nurses continue to follow any child with a reported blood level of 3.5µg/dl offering telephonic informational support, and repeat testing as needed to ensure the child's high lead level is addressed.

# Child Care Health Consultants

Public Health nurses are trained to offer child care consultation to all licensed, license exempt, and non-regulated child care providers. The Health Center serves both Cape Girardeau and Scott County's child care facilities through this program.

## Cape Girardeau County

A total of 18 facilities were served in Cape Girardeau County in 2022, with 96 staff members attending training.

## Scott County

A total of 27 facilities were served in Scott County in 2022, with a total of 50 staff members attending training.

## Child Care CPR

Through a State grant, the Cape Girardeau County Public Health Center was able to provide free CPR and First Aid courses for registered childcare providers. This provided CPR cards that are good for 2 years and fulfilled the State requirements for CPR and First Aid training under childcare regulations. These classes were halted at the height of the pandemic in 2020 but were resumed in 2021 at intervals of once per month. Class sizes were limited due to the ongoing pandemic but were well attended.

15 Classes held in 2022  
106 Total students in attendance



# Women, Infants, and Children (WIC)

WIC is a supplemental nutrition education program that helps mothers and young children eat well and stay healthy. Women, Infants, and Children who meet income guidelines may go to any WIC provider in the State of Missouri to apply for WIC benefits. Income guidelines are established by the United States Department of Agriculture.



WIC provides breastfeeding education and support; nutrition and health education; referrals and health screenings; and funds to buy nutritious foods. Our WIC office is open during the Health Center's regular hours, Monday through Friday. In addition, a late clinic is offered once a month to provide additional availability for clients.

## 2022 Caseload

10,211 Client Visits:  
2,719 Women  
3,435 Infants  
4,057 Children

## Breastfeeding Peer Counseling Program

The Breastfeeding Peer Counselor Program provides breastfeeding education and support to WIC participants. The Breastfeeding Peer Counselors teach breastfeeding classes monthly as well as host a quarterly support group. In addition to one-on-one counseling provided to moms, there are also electric breast pumps available for loan to program participants. In February, the baby formula shortage began and may have contributed to the increase in our breastfeeding initiation rate.

25 Electric breast pumps available  
650 Breastfeeding/prenatal contact visits  
48.1% Breastfeeding initiation rate



## Safe Sleep Program Training

This training will prepare child care providers to reduce the risk of SIDS in family home, group home, and child care center settings by using safe sleep practices recommended by the American Academy of Pediatrics. This training meets the rule requiring all caregivers of infants in licensed child care settings to complete safe sleep training.

# Rural Health Clinic

The Rural Health Clinic (RHC) is open five days a week during the Health Center's regular business hours and provides primary health care for children from birth through 18 years of age that includes well checks, sick care, childhood immunizations, sports physicals, asthma care, and more. Acceptable methods of payment include Medicaid & Medicare, and commercial insurance. Otherwise, fees may be assessed.

## Women's Care

In May 2016, the RHC added a new service, Women's Care. This service includes well-woman's exams where the Nurse Practitioner discusses birth control, cancer screenings, vaccinations, sexually transmitted infections, and addresses concerns about sex, menstrual cycle concerns, and pre-conception counseling with patients. The RHC also participates in the Show-Me Healthy Woman program to promote cancer screenings in women aged 35-64. In 2022, 10 appointments were made and only 4 were kept.

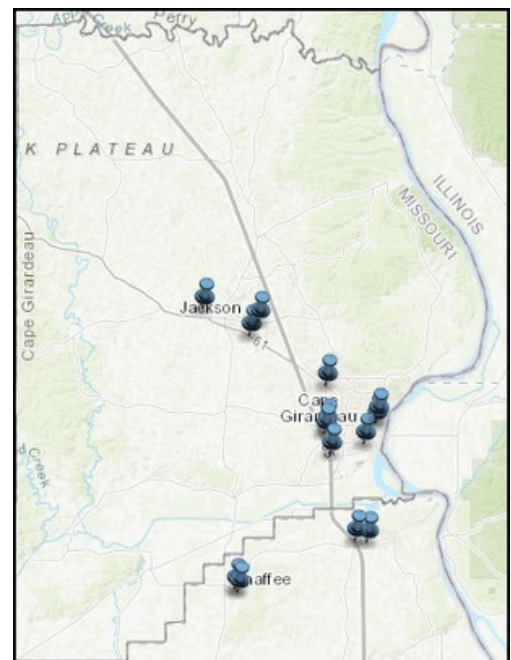
## Patient Visits

905 Patient appointments were made and kept  
191 Children's Well Checks  
209 Children's Sick Visits  
50 Women's Care Visits

## Immunizations

Immunizations in the RHC are counted separately from immunizations given as a part of the Health Center's immunization clinic and walk-in services. In 2022, these were some of the top vaccinations given:

76 Flu Vaccinations  
59 Gardasil Vaccinations  
73 Meningococcal Vaccinations  
217 Other Childhood Vaccines Administered



Locations of Rural Health Clinics in Southeast Missouri

# Communicable Disease

Missouri has 116 reportable communicable diseases that local healthcare providers are required to report to the Health Center. Public health nurses investigate and follow up on the reported communicable disease. Collected data is then analyzed and distributed to the Missouri Department of Health and Senior Services (MDHSS). Case numbers for the top five reportable communicable diseases for Cape Girardeau County in 2022:

- 30 Campylobacteriosis
- 43 Hepatitis C Chronic Infections
- 28 Salmonellosis
- 42 Rocky Mountain Spotted Fever
- 140 Animal Bites
- 10,836 COVID-19 cases

## Tuberculosis (TB)

The Health Center performs investigations and follow-ups of all positive tuberculin skin tests in the county. In addition, public health nurses provide case management services for latent TB infection (not contagious) and active TB disease (contagious). In 2022, nurses followed:

- 2 Active Tb cases
- 1 Latent Tb case

## Sexual Transmitted Diseases (STD)

STD testing is now available on Tuesdays from 10 a.m. to 12 p.m. and 1 p.m. to 4 p.m. and also on Thursdays from 1 p.m. to 4 p.m. on a walk-in basis. The clinic offers confidential screenings, treatment & counseling for Sexually Transmitted Diseases (STDs), such as gonorrhea, syphilis, Chlamydia, Hepatitis C, and HIV.

The Health Center also treats individuals who are a primary-named partner (epi-linked) to positive STD cases and those reported by a community provider.

## STD Clinic Data for 2022

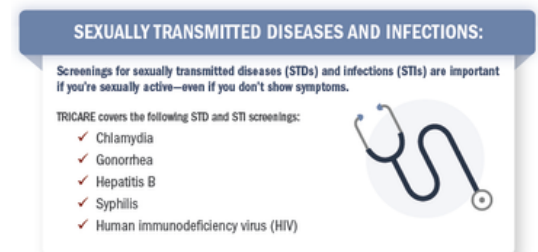
- 782 Encounters in clinic
- 183 Hepatitis C tests / 10 positive
- 465 Chlamydia tests / 95 positive
- 463 Gonorrhea tests / 36 positive
- 328 Syphilis tests / 44 positive
- 34 Epi-linked cases (a partner)
- 32 CD-1 report (tested and / or treated elsewhere)

## Infectious Disease Task Force

The Task Force was created in 2005 and is made up of public health professionals, physicians, emergency responders, county government officials, and other community leaders and stakeholders. This task force meets regularly to discuss current trends in infectious diseases in the area and the appropriate response to various infectious disease outbreak scenarios.



Regular screenings for sexually transmitted diseases and infections helps health and readiness. Talk with your doctor about screenings you might need.



MHS Military Health System health.mil

# Communicable Disease Services

## Communicable Disease (CD) Clinic

Started in 2000, CD clinic was and continues to be, the only clinic between St. Louis and Memphis that provides primary and follow-up care for individuals diagnosed with HIV/AIDS. The Infectious Disease specialists in Cape Girardeau provide care for individuals living mainly in the Southeast Missouri counties of Cape Girardeau, Scott, Bollinger, Stoddard, Dunklin, Mississippi, Pemiscot, New Madrid, Madison, Butler, Wayne, Perry, and Ripley.

The doctors also evaluate and treat individuals diagnosed with latent or active Tuberculosis who meet the criteria for coverage through the State of Missouri's Diagnostic Services program overseen by the Missouri Department of Health and Senior Services Tuberculosis Control Program. The caseload for 2022 averaged 180 active patients.

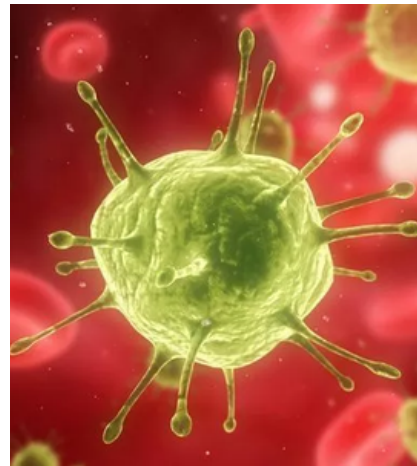
## Preexposure Prophylaxis (PrEP) for HIV Prevention

In late 2022 the Health Center was approved to participate in a 3-year grant-funded initiative, as part of the national Ending the HIV Epidemic Plan, to develop a PrEP clinic. The clinic's initial goal is to reach a caseload of 20 patients in the first year of funding. The clinic will provide prescriptions for PrEP medication to individuals who have received clinical evaluation and pertinent laboratory testing. The staff has received specialized training to provide screening for PrEP readiness, rapid HIV and Hep C testing, and education to persons seeking PrEP medications. The caseload for 2022: 3 clients

## HIV/AIDS Case Management

The Health Center is contracted with the State of Missouri through funds from the Health Resources and Services Administration (HRSA) of the U.S. Department of Health and Human Services (HHS) to provide case management services for Southeast Missouri residents living with human immunodeficiency virus (HIV) and/or acquired immunodeficiency syndrome (AIDS). Counties served include Cape Girardeau, Bollinger, Scott, Perry, and Mississippi.

Number served throughout 2022:  
88 Clients



A 3D look at the HIV virus. (Image credit: Sebastian Kaulitzki/Shutterstock)

## Hepatitis C Clinic

The Hepatitis C Clinic at the Health Center was started in 2017. The clinic accepts patients with Hepatitis C and creates individualized treatment plans based on various disease factors. Patients are released from care after completion of the recommended treatment and follow-up laboratory work.

9 Total clients initiating treatment  
19 Clients referred to the clinic

# Health Education Services

## Health Education Takes on a New Look

Health education services are varied and reach a number of different populations: young children to adults and the elderly. During 2022, the variety of the Health Center's Health Education Services and outreach began to grow again. As the pandemic-related restrictions began to lessen, many efforts were made to reach as much of the community as possible using a myriad of strategies - once more offering face-to-face interaction with the community. The Health Center continued employing communication strategies that included messaging in the form of TV interviews, social media postings, newspaper articles, and guest speaking on local radio programs.

## Safe Cribs Program

The Safe Cribs program provides a portable Pack N' Play to eligible pregnant women who otherwise would not be able to afford a crib or separate sleep surface for the infant. The goal of the program is to reduce co-sleeping, which can lead to Sudden Infant Death Syndrome (SIDS). A 30-minute education session with the mother about safe sleep practices and a home visit is also a part of the program.

7 Cribs distributed in 2022

## Health and Wellness Fairs

The Health Center seeks opportunities to work with other community partners who host health and wellness fairs during the year. Annually, the Health Center may participate in as many as 20 or more health and wellness fairs seeking to promote healthy behaviors, prevent bad health outcomes and protect the generations to come.

## Public Health Connect

On the second Friday of each month, a Health Center representative sits down with a local radio station personality and discusses a different topic of interest. This opportunity allows the Health Center to provide education and promote awareness about different subjects throughout the year.



## Chronic Disease and Diabetes Self-Management Classes

The Health Center collaborates with the Mississippi County Health Department on a regional effort to provide six-week courses that are free of charge and aimed at empowering individuals with chronic diseases or diabetes, and their caregivers, to better manage their condition(s).

8 Course offerings  
3 Participants completing classes

# Environmental Public Health Services

The Environmental Public Health Specialists (EPHS) inspect school cafeterias, restaurants, retail grocery stores, temporary food events, child care facilities, lodging establishments, taverns, and sewage systems. Technical information and advice are available to residents about other environmental issues including private drinking water, air quality, pest control, and mold. Food safety education classes are provided to satisfy county requirements for all food handlers to be trained in proper food safety practices. .

## Food Safety Education Classes

Basic Sanitation Class is a two-hour required course for all food handlers that can be taken in-person at the Health Center or online at State Food Safety. ServSafe® is a two-day, accredited, food safety training and certificate program required for all food services managers that discuss foodborne illness prevention through safe food handling.

147 Basic Sanitation Class participants  
12 ServSafe® Class participants

## Other Activities

133 Water samples collected  
8 Local emergency responses  
92 Complaints



## Food Establishment Inspections

Local food establishments are inspected to ensure compliance with the Missouri Food Code. Inspections are unannounced and conducted at a frequency of every 6 months, 9 months, or yearly basis depending on the establishment's potential risk of spreading disease. Establishments at low risk are inspected on an annual basis. Temporary food stands are also inspected during all public events.

552 Food establishments  
26 Childcare facilities  
282 Temporary food stands  
16 Lodging facilities



# Emergency Preparedness

A public health emergency is any threat to the public's health or safety, such as a naturally occurring infectious disease outbreak, a natural disaster, a bioterrorism attack, or any event that has the potential for a significant health impact on the community.

The Health Center continues to update response plans for disasters due to weather, illness, and manmade incidents. The staff of the Health Center is continually trained on how to best assist the community in a disaster. The Health Center's Regional Public Health Emergency Response Planner assists in coordinating emergency plans and responses for Cape Girardeau County.

## Emergency Preparedness Capabilities Addressed in 2022

There are a total of 15 established capabilities that serve as national standards for public health preparedness planning. Each year Local Public Health Agencies place significant emphasis on identified capabilities while maintaining response measures for all fifteen. In 2022, Cape Girardeau County Public Health Center focused on the following capabilities:

- Emergency Operations Coordination
- Emergency Public Information & Warning
- Non-Pharmaceutical Interventions

## Preparedness Exercises and Planning

Cape Girardeau County Public Health Center was chosen to receive funding through the Council of State and Territorial Epidemiologists (CSTE) to conduct a tabletop exercise that focused on public health emergency preparedness-related activities, responsibilities, and capabilities. Local community partners participated in this exercise which provided the opportunity to share preparedness and response plans. Local partners included representatives from fire and rescue, law enforcement, first responders, county emergency management and administration, hospitals, mental health agencies, long-term care, primary care providers and social service organizations.

With the assistance of Medical Reserve Corps volunteers, the Health Center tested the capability of providing drive-through vaccination clinics.



# Community Health Worker

By definition, a Community Health Worker is a frontline public health worker who is a trusted member of and/or has an unusually close understanding of the community served. This enables the worker to serve as a liaison between health and social services and the community to facilitate access to services.

## Community Health Worker Position

Community health worker duties take on a wide variety of needs for community members. The Health Center added the position of Community Health Worker (CHW) in mid-2022. This position is able to identify community members who need help, either by self-referral or by community partner referral. The CHW is also able to assist with connecting adults and children to dental care. Calls come in every day from people needing assistance with any number of issues that develop in their lives. With the addition of the Community Health Worker position, the Health Center is better situated to positively impact these community members' lives.

5 Non-dental needs assisted  
67 Dental needs assisted

## Dental Screening

The Health Center is also involved with providing dental varnishes at area schools. A certified dental assistant is a staff member who stays in contact with the schools, dentists, and volunteers to be able to provide no-charge fluoride varnishes to all students who have received permission from their parents. Prior to the varnish application, a licensed dentist does a screening. Parents are notified of any irregular findings. In the fall of 2022, the following was provided:

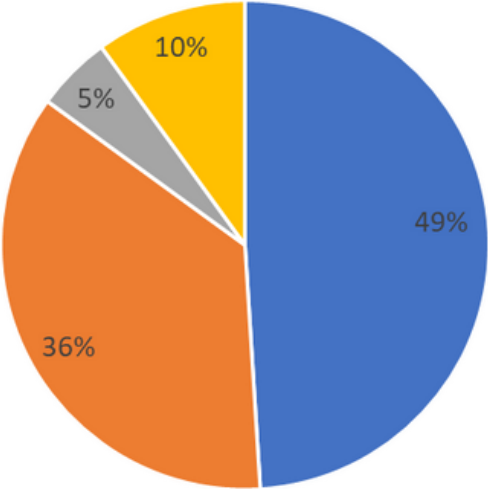
2,775 School and Childcare screenings  
1,341 Varnish applications





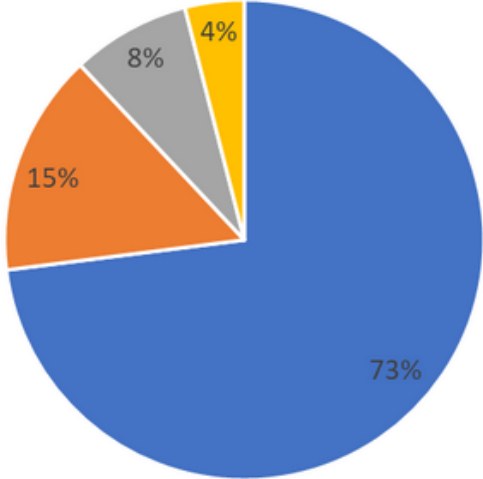
# Financial Statement

Total Revenue 2022:  
\$3,784,223.00



- Local Taxes
- State-Federal Grants & Contracts
- Medicaid-Medicare-Insurance
- Fee For Service

Total Expenditures 2022:  
\$3,153,208.00



- Salaries & Benefits
- Grants-Contracts
- Administrative Costs
- Supplies & Equipment

Activities and programs of the Cape Girardeau County Health Center are supported by the members of the Health Center's Board of Trustees

John Freeze, Chairperson  
Georganne Syler, Vice Chairperson  
William Lewis, Secretary/Treasurer  
Diane Howard, Member  
Eric Becking, Member

# Community Coalitions

One of the ways the Cape Girardeau County Public Health Center keeps in touch with the county's health needs and works with other local organizations is by sitting on several area coalitions, task forces, and other community groups. Below is a list of coalitions and other community groups the Health Center was a part of in 2022.

- Aging Committee
- Annual East Missouri Action Agency Recruitment Meeting
- Child Care Consultant Advisory Committee
- Child Fatality Review Board
- Environmental Task Force
- EPIC Alcohol/Drug Committee
- Healthy Communities Coalition
- Housing Committee
- Infectious Disease Task Force
- Local Emergency Planning District
- Missouri Association of Local Public Health Agencies (MO ALPHA)
- Missouri Breast Health Coalition
- Missouri Immunization Coalition
- MO Emergency Management Association
- NACCHO Medical Counter Measures Workgroup
- Oral Health Coalition
- Project HOPE
- Region E Community Emergency Response Team Instructors
- Region E Health Care Coalition
- Region E Multi-Agency Coordination Center
- Region E National Exercise Planning Workgroup
- Region E Threat and Hazard Identification and Risk Assessment Workgroup
- Regional Homeland Security Oversight Committee
- Regional Planning Group
- School Wellness Committees
- SEMO Breastfeeding Task Force
- SEMO Environmental Public Health Specialist Association
- SEMO Information Officers Association
- Southeast Coalition for Roadway Safety
- Southeast Missouri Emergency Management Association
- Teen Pregnancy and Response Network

# Cape Girardeau County Public Health Center

1121 Linden St.  
P.O. Box 1839  
Cape Girardeau, MO 63702-1839

Phone: (573) 335-7846  
Fax: (573) 335-5909

**STAY UP-TO-DATE AND CONNECTED:**

Visit our Webpage: [www.capecountyhealth.com](http://www.capecountyhealth.com)  
[www.facebook.com/CapeGirardeauCountyPublicHealthCenter](https://www.facebook.com/CapeGirardeauCountyPublicHealthCenter)

**Environmental  
Services**  
(573) 335-7846

**Rural Health  
Clinic (RHC)**  
(573) 335-2229

**Woman, Infants,  
& Children (WIC)**  
(573) 335-4330